

Our Business Division

Turbo Cast (India) Pvt. Ltd. (Aerospace Division)

- ▶ Aerospace Application
- ▶ Defense Application
- ▶ Marine Application
- ▶ Electronics Application
- ▶ Turbo Charger Application
- ▶ Nuclear Application

Turbo2 Cast Pvt. Ltd. (Commercial Division)

- ▶ Valves Application
- ▶ Pumps Application
- ▶ General Engineering
- ▶ Oil & Gas Application
- ▶ Automobile Application

Turbo Cast (USA) Inc. (USA Ware House)

4924 Buttermilk Hollow Road,
West Mifflin,
PA-15122, USA

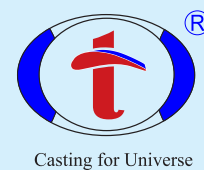
Our Valuable Customers



Our Approval / Accreditation

- ▶ ISO 9001:2015 of TUV NORD, Germany.
- ▶ ISO 14001:2015 of TUV NORD, Germany.
- ▶ ISO 45001:2018 of TUV NORD, Germany.
- ▶ P.E.D. (2014/68/EU) of TUV NORD, Germany.
- ▶ AD 2000-Merkblatt W0 of TUV NORD, Germany.
- ▶ Member of Investment Casting Institute, USA

Turbo2 Cast Pvt. Ltd.



Regd. Office:-

"Satyam", 35 / Silver Sand, Opp.:- Big Bazar,
150 Feet Ring Road, Rajkot - 360 001, India.

E-Mail : info@turbo-cast.com

Website : www.turbo-cast.com

Works:-

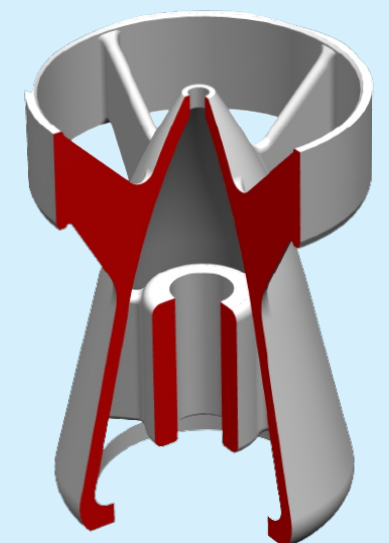
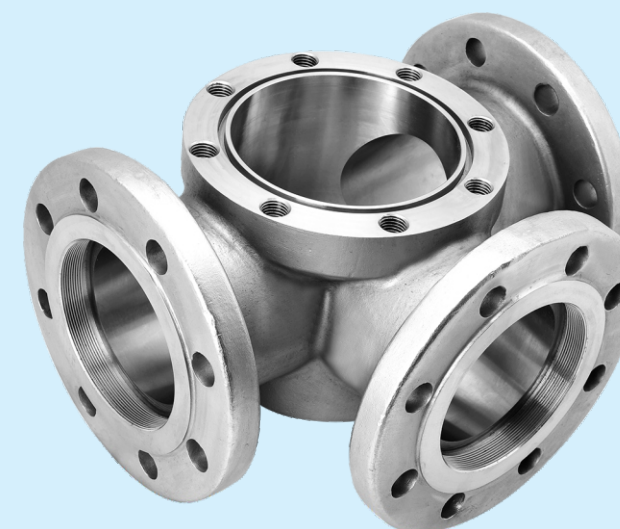
Survey No. 33, Village :- Biliyala,
Rajkot-Gondal National Highway,
Opp.:- Biliyala Village, Rajkot - 360311
Phone:- +91-2825 - 280301 / 280302

Turbo2 Cast Pvt. Ltd.

Commercial Division (Unit-2)



Investment Castings



About Us

Turbo Cast (India) Pvt. Ltd. is India's First Indigenous Investment Casting Foundry, started in 2015, especially for Aerospace, Defense Application and Aluminium Alloys, accredited for AS9100D, Nadcap (NDT) & Nadcap (Welding) Certification. We have applied for Nadcap (Heat Treatment) & Nadcap (Radiography Testing) and planned to get both Certification by 2023.

We have in-house Tool Manufacturing & CNC Machining Facility.

In 2023, we have started our 2nd unit Turbo2 Cast Pvt. Ltd. (Commercial Division).

In 2022, we have registered Turbo Cast USA Inc. & started Ware House in USA.

Product

Lost Wax Investment Castings for Valves, Pumps, General Engineering, Automobile, Renewable Energy & Oil & Gas Application.

Manufacturing Capabilities

Single Piece Size : 25 X 10 X 5 mm (Min.) to 600 X 300 X 200 mm (Max)

Single Piece Wt. : 50 Grams to 60 Kg. for Steel & 15 Grams to 15 Kg. for Al.

Material of Product

- Stainless Steel** : 1.4408, 1.4581, CK3MCuN, CN7M, CK-20, CF3M, MSRR 6527, etc.
- Low Alloy Steel** : WCB, WCC, LCB, WC6, 1.0619, 1.6220, 1.7744.5, 15CDV6 etc.
- Cobalt Alloys** : Stellite-6, Stellite-12, Stellite-20, Co28Cr6Mo, etc.
- Copper Alloys** : Aluminum Bronze, Tin Bronze, Phosphorus Bronze, etc.
- Nickel Alloys** : CW12MW, CZ-100, M35-1, CW6MC, CU5MCuC, N12MV, etc.
- Prec. Hard. Steel** : 17-4 PH, 15-5 PH, etc.
- Duplex Steel** : Gr.1B (CD4MCuN), Gr.3A,Gr.4A, Gr.5A, Gr. 6A, etc.

Testing & Inspection Facilities

Chemical Analysis (Spectro) & Mechanical Testing
Hardness & Impact Testing.
Dye Penetrant Testing
Magnetic Particle Inspection
Microstructure Review & Grain Size Measurement.
Inclusion Rating & Ferrite Content Checking.
Intergranular Corrosion Test.

Computed Radiography Test (Nadcap from 2023)
Casting Solidification Simulation (Outsource)
Hydro Test. Up to 10,000 PSI (700 Kg/cm2)
Roughness Tester from Carl Zeiss GmbH.
CMM from Carl Zeiss (700 X 1000 X 600)
Contour Measuring Machine (Carl Zeiss GmbH)
Radiation Alert Digilert 100 (Mineralab LLC, USA)

Products

